



Asset Management

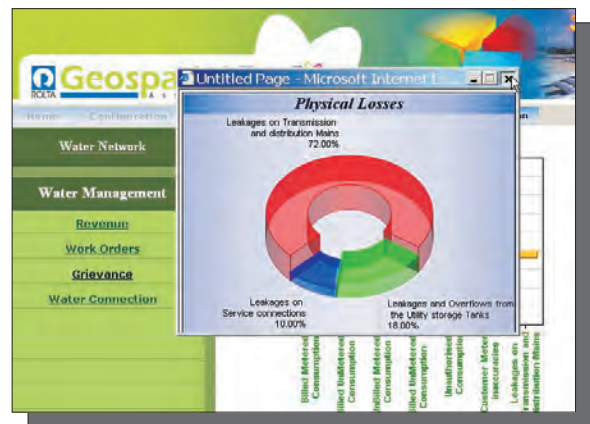
Efficient integration and management of assets life-cycle data is the key to successful management of infrastructure systems. Lack of data integration can result in significant inefficiencies and suboptimal operational and long-term asset management strategies. Integrated asset management systems help overcome these inefficiencies and improve the coordination and cost-effectiveness of asset management decisions.

Challenges of data integration and management are by far the biggest impediment to implementing successful asset management strategies. Integrated GIS-based asset management system can significantly improve the availability and consistency of the asset data across different departmental systems and facilitate the flow and exchange of asset information.

ROLTA Geospatial Fusion™ is bringing about the paradigm shift in the business of governance by leveraging on the opportunities provided by the advancement in information technology. Asset management systems integrated with a GIS allow organization to manage, visualize, analyze, and communicate information about assets. These new insights lead you to the secrets that make for a powerful and successful asset life cycle risk management program.

ROLTA solution for Asset Management is capable of creating editing and modifying the status of work request after resolving. Assets with work request are searched on map, enhancing decision-making process.

Work request created are visible across enterprise. Pie chart shows % of interruptions taken place due to managing the assets on monthly basis. Purchase status can be monitored flowing through business process. Inventory management can be monitored and location of warehouses can be displayed on map.



Key Features

- Local language interface with multilingual support.
- Seamless Integration of spatial and non-spatial data from disparate databases.
- Advance Data security and storage.
- Scalable and configurable across enterprise.
- Share data and reports across enterprise.
- Integrated secure web-client access.
- Efficient Management of Resource.
- Integrated workflow compress time between processes.
- Thematic maps with high visual impact.
- Statistical analysis on spatial feature with web interfaces.

Benefits

- Asset management capabilities (attribute tables/free fields/report generator)
- Plan, document and track key tasks and activities for asset management policy development and implementation.
- Overview of Newly Assessed and Reassessed Properties.
- Status, Type of Water Connection by use (Residential, commercial, etc.)
- Access Comprehensive Information and Inventory of Assets.
- Integration with other legacy systems to create a total, balanced view of related business information of network and services.



Rolta India Limited

West

Central & Registered Office

Rolta Tower A,
Rolta Technology Park,
MIDC, Andheri (E),
Mumbai 400093.
Tel: +91 (22) 2926 6666
Fax: +91 (22) 2836 5992
Email: indsales@rolta.com

Corporate Office

21st Floor, Maker Tower F,
Cuffe Parade, Mumbai - 400 005.
Tel: +91 (22) 2215 3984
Fax: +91 (22) 2215 3994

Pune

101, Mantri House,
929, Fergusson College Road,
Pune - 411 004.
Tel : +91 (20) 2565 3772,
2567 8372

Vadodara

303 / 304 Concorde, 3rd Floor,
R. C. Dutt Road,
Alkapuri,
Vadodara - 390 005.
Tel : +91 (265) 235 2612,
232 2949

Gandhinagar

Plot No. 565 / 1, Sector 8 C,
Gandhinagar - 382 008.
Tel : +91 (79) 2324 1322

Bhopal

2nd Floor, Harrison House,
6 Malviya Nagar,
Raj Bhavan Road,
Bhopal - 462 003.

East

Kolkata

501, Lords, 7/1 Lord Sinha Road,
Kolkata - 700 071.
Tel : +91 (33) 2282 5756 /
7092

Bhubaneshwar

47, Madhusudan Nagar,
Bhubaneshwar - 751 001.
Tel : +91 (674) 239 0190

North

Delhi NCR

Rolta Technology Park,
Plot #187, Phase I,
Udyog Vihar,
Gurgaon - 122 016.
Tel : +91 (124) 439 7000

Chandigarh

SCO - 840, 2nd Floor,
Shivalik Enclave, NAC, Manimajra,
Chandigarh - 160 101.
Tel : +91 (172) 273 0254 /
3728

Dehradun

2nd Floor, Raj Plaza, 75, Rajpur
Road, Dehradun - 248 001.
Tel : +91 (135) 274 2474

South

Chennai

Century Plaza, 6th Floor,
561 / 562 Mount Road,
Chennai - 600 018.
Tel : +91 (44) 2432 9107,
2434 9634

Bangalore

Mittal Towers, 'C' Wing, 8th Floor,
47 / 6, M. G. Road,
Bangalore - 560 001.
Tel : +91 (80) 2558 1614 /
1623

Hyderabad

White House, Block III,
2nd floor, No. 6-3-1192/1/1,
Kundanbagh, Begumpet,
Hyderabad, Andhra Pradesh.
Tel: +91 (40) 2330 6806,
2339 1083